



THE LONDONER  
LEICESTER SQ.

# The Green Room Floorplan

# THE SPACES AT A GLANCE

---

**50 WHITCOMB'S**  
GFL

---

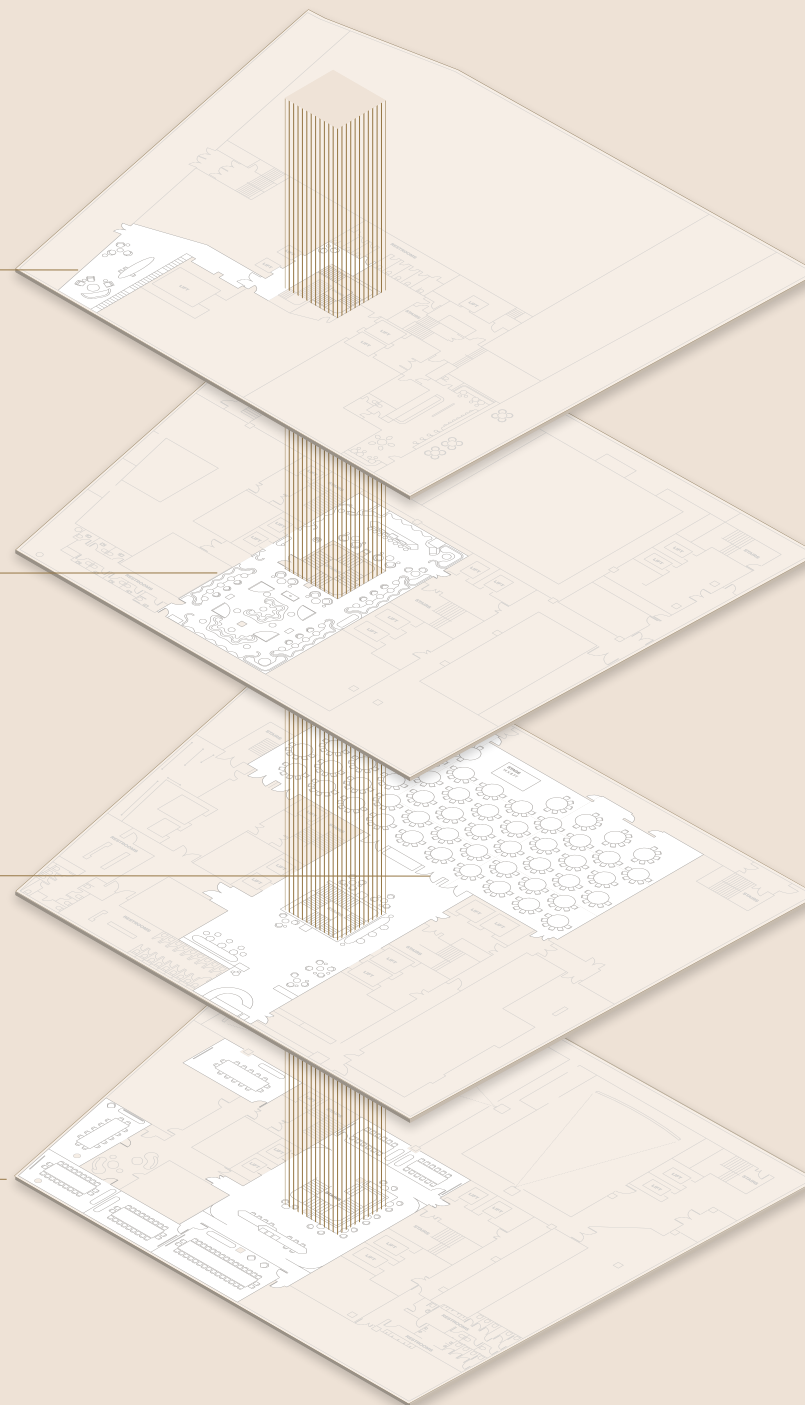
**THE GREEN ROOM**  
B1

---

**THE BALLROOM**  
B2

---

**THE GALLERY**  
B3

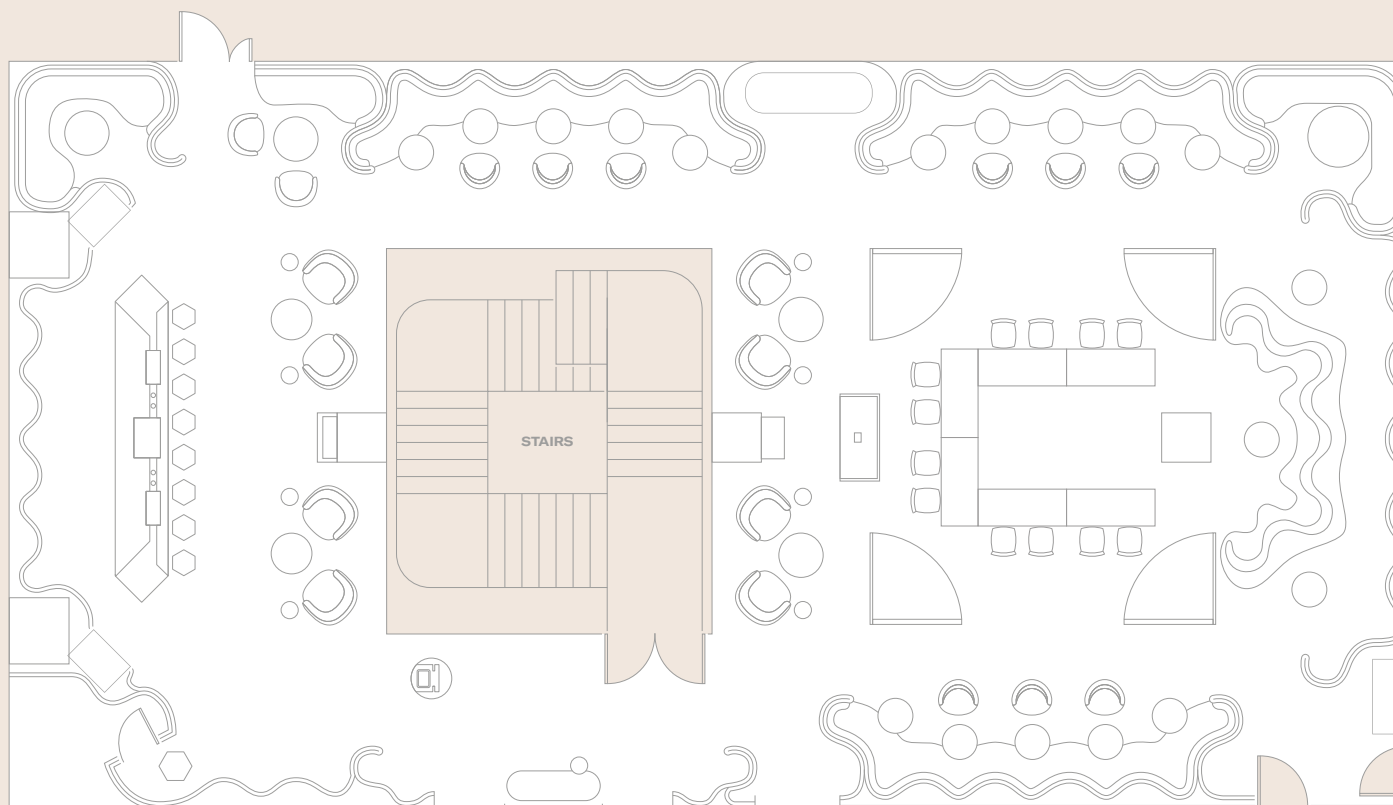


# THE GREEN ROOM

DIMENSIONS

	Standing	Area		Length		Width		Height	
	guests	sq. m	sq. ft	m	ft	m	ft	m	ft
The Green Room	180	299	3,214	23.7	77' 8"	12.6	41' 3"	2.2	7' 2"

# THE GREEN ROOM

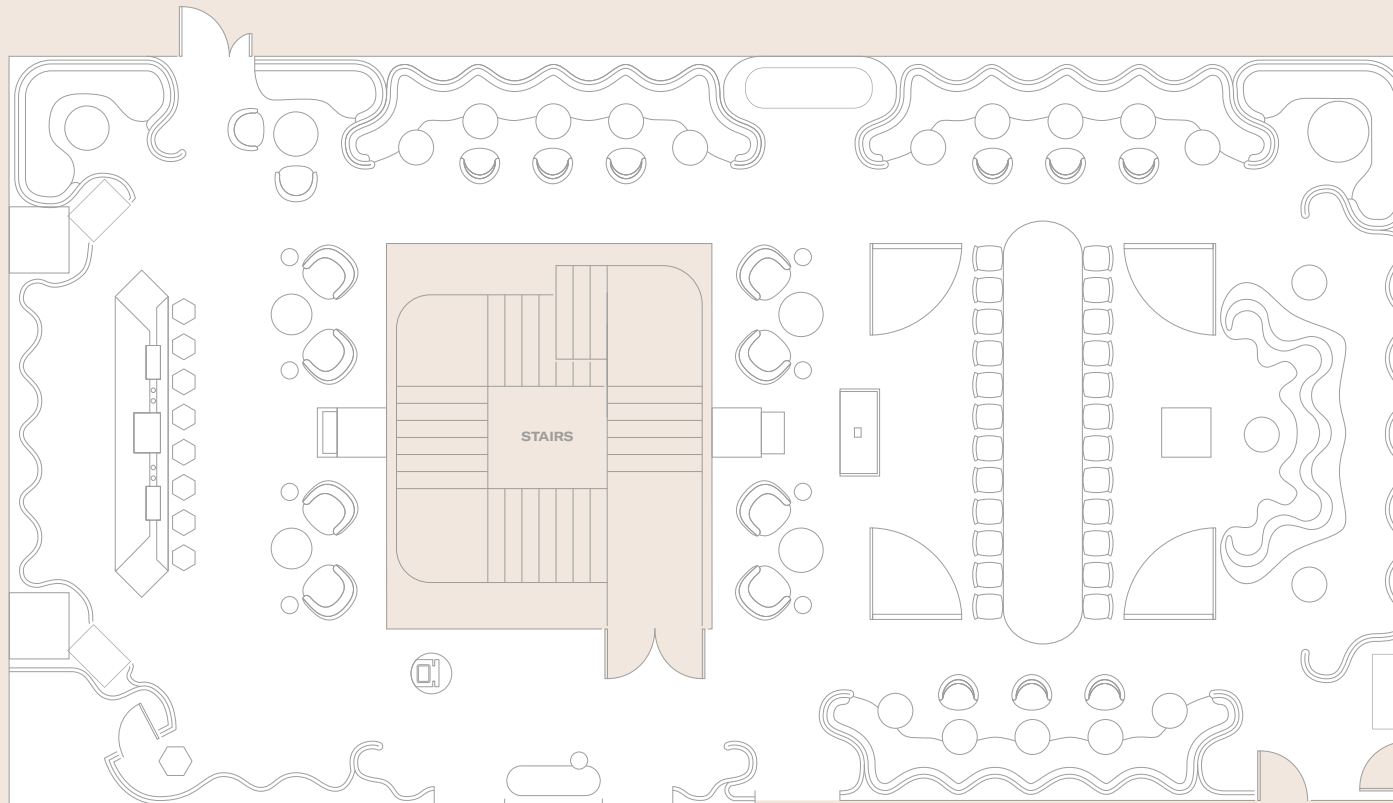


**U-SHAPE**  
with bars

6 tables  
12 capacity at 2 guests per table

For more room layouts tailored to your event,  
please email [events@thelondoner.com](mailto:events@thelondoner.com)

# THE GREEN ROOM

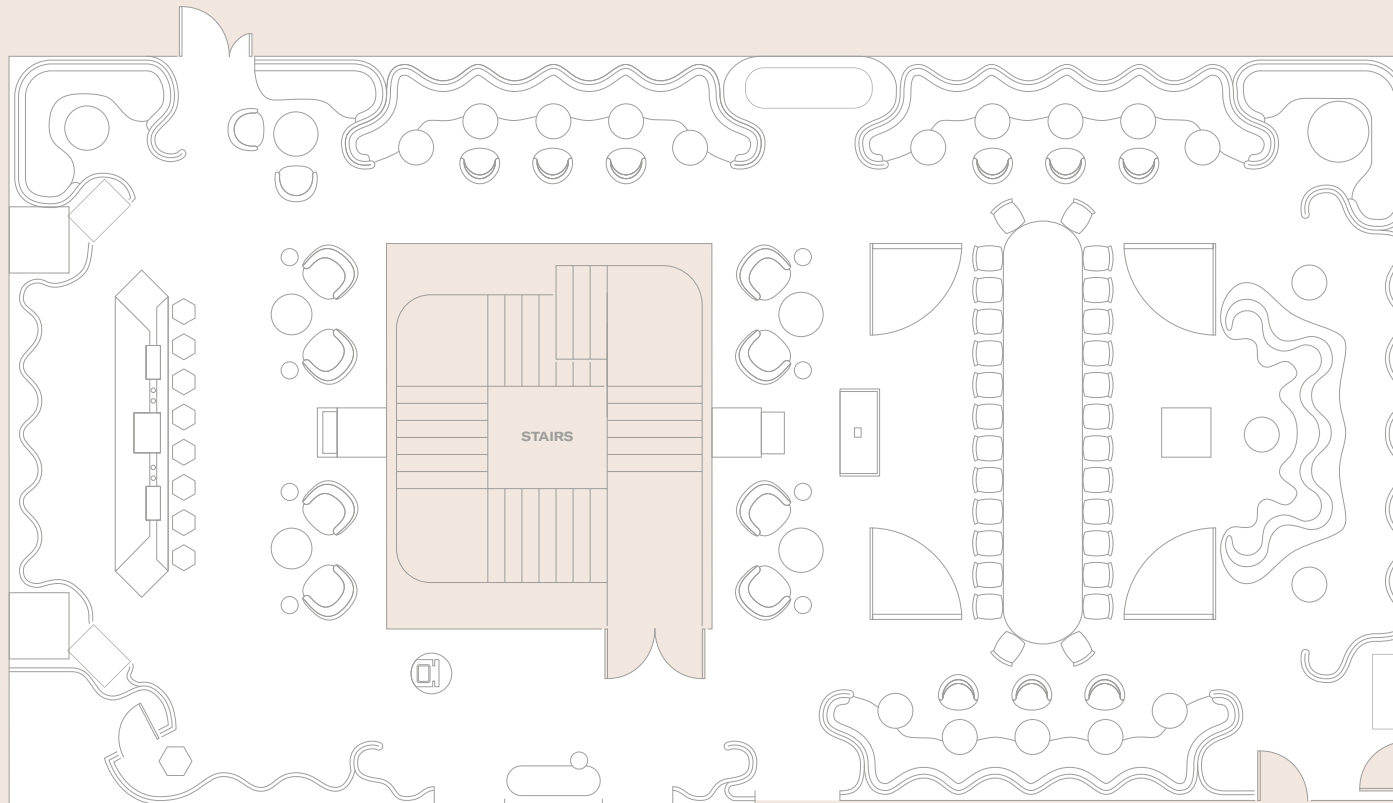


**BOARDROOM**  
with bars

1 table  
24 capacity at 24 guests per table

For more room layouts tailored to your event,  
please email [events@thelondoner.com](mailto:events@thelondoner.com)

# THE GREEN ROOM

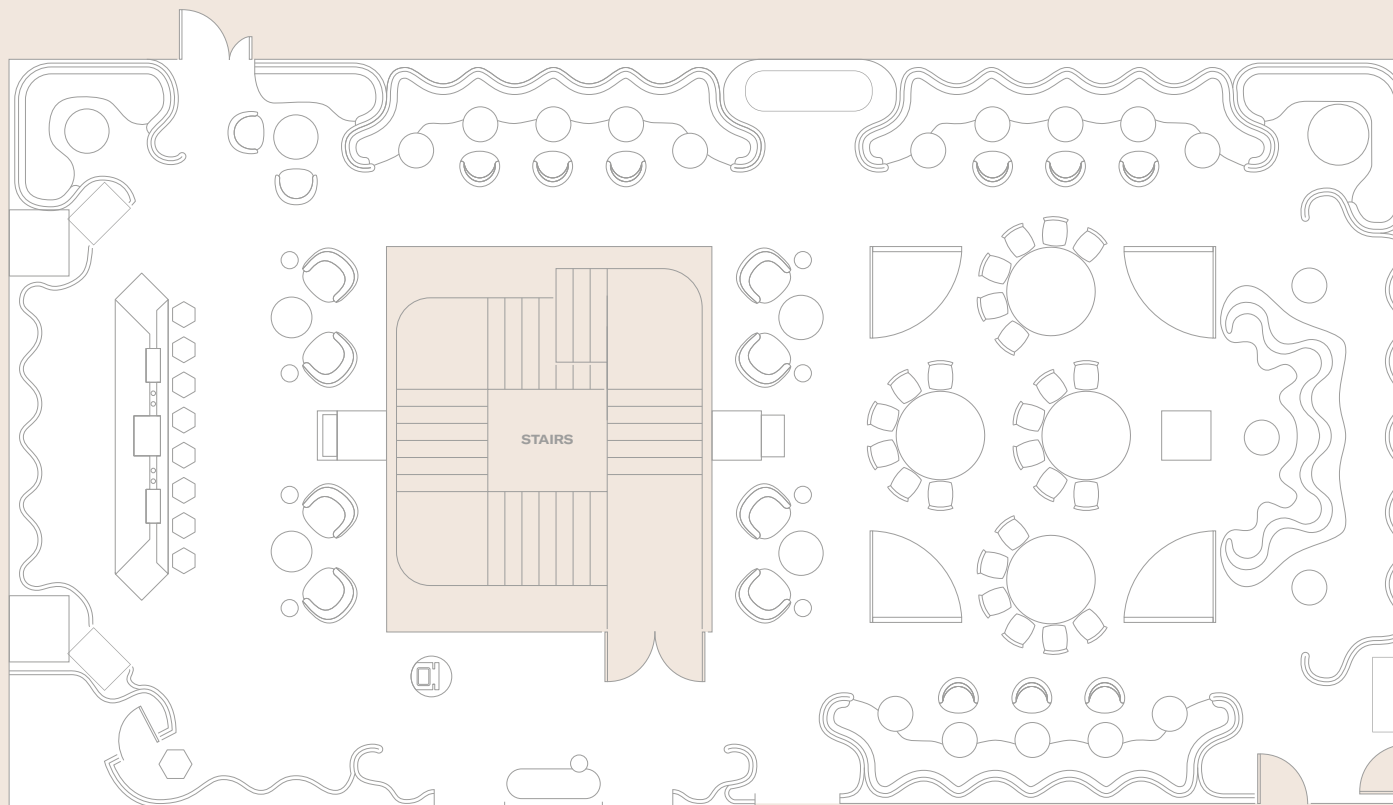


**BOARDROOM**  
with bars

1 table  
28 capacity at 28 guests per table

For more room layouts tailored to your event,  
please email [events@thelondoner.com](mailto:events@thelondoner.com)

# THE GREEN ROOM

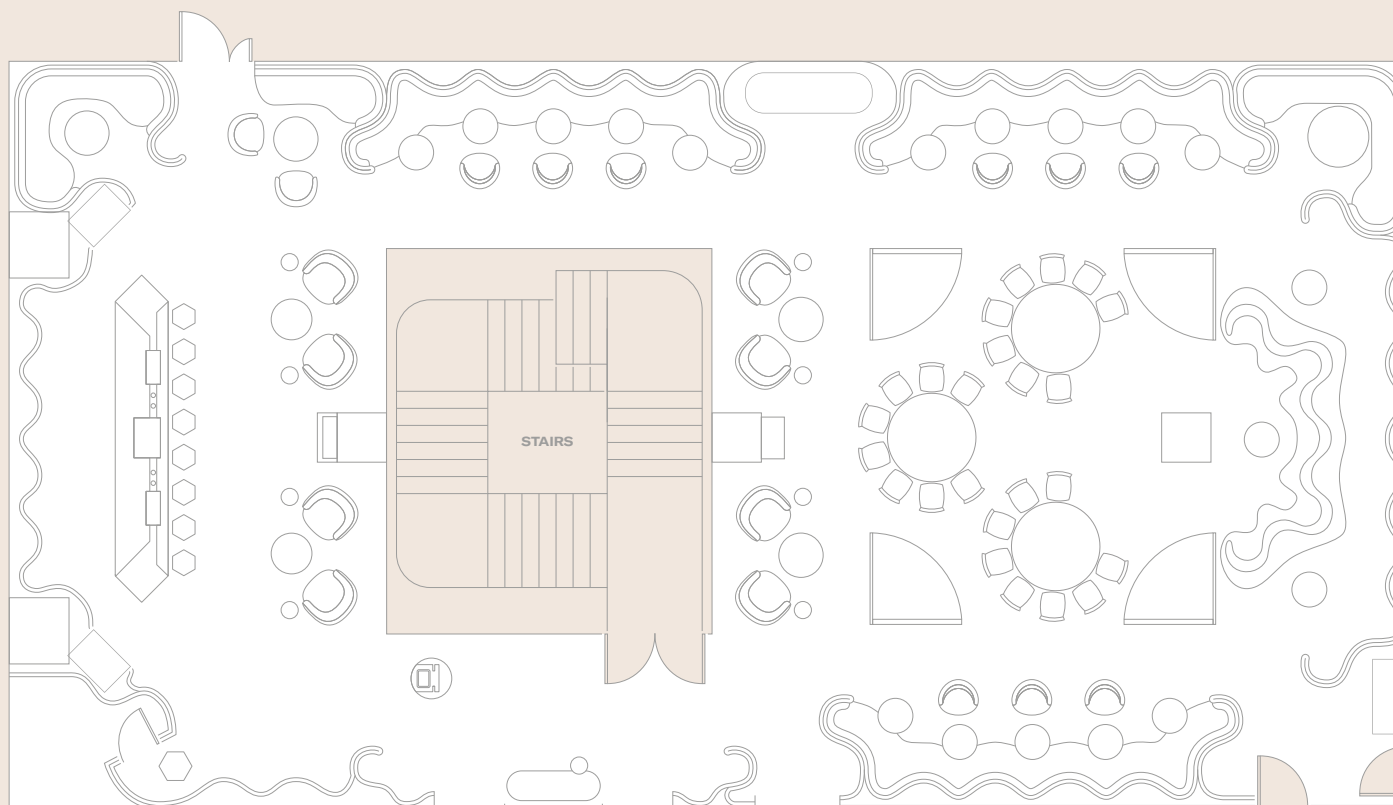


**CABARET**  
with bars

4 round tables  
24 capacity at 6 guests per table

For more room layouts tailored to your event,  
please email [events@thelondoner.com](mailto:events@thelondoner.com)

# THE GREEN ROOM



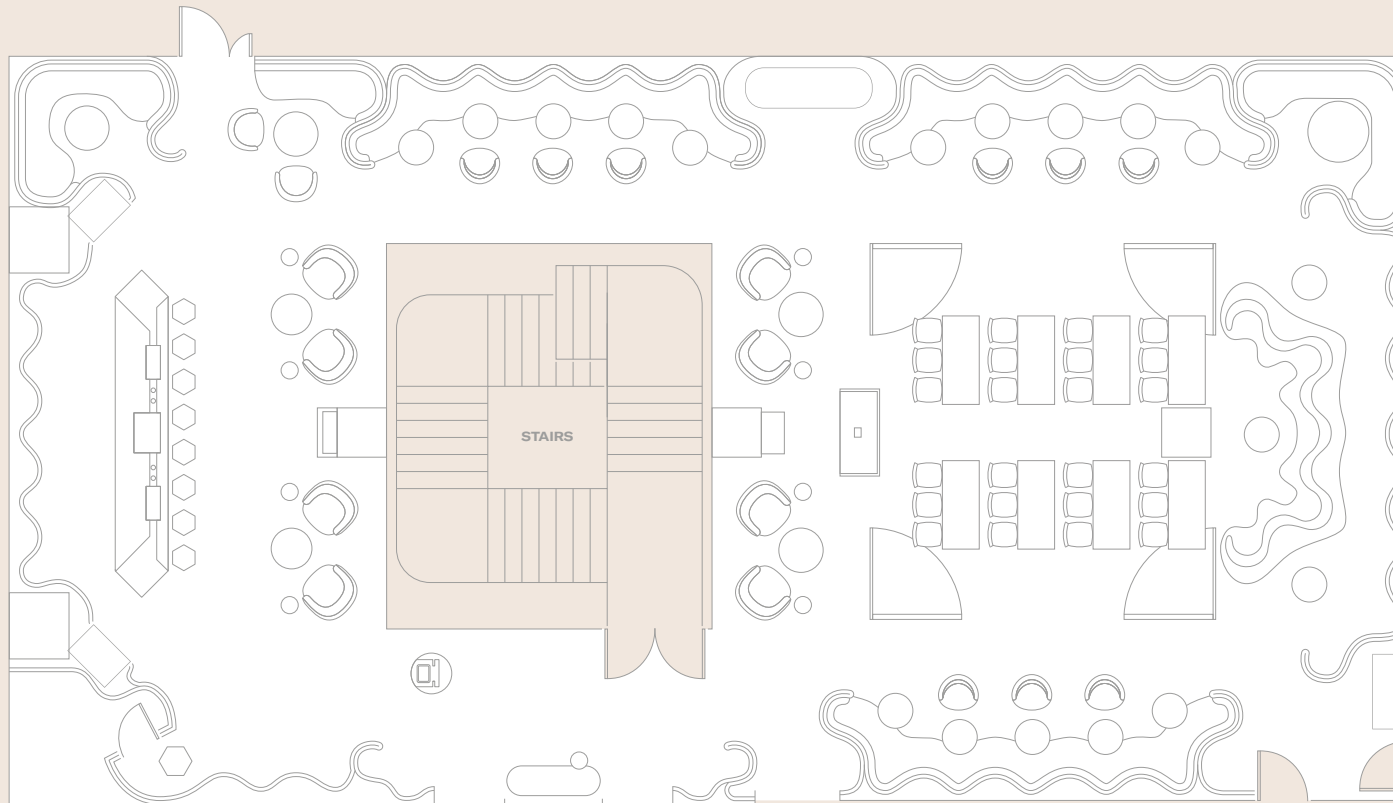
**CABARET**  
with bars

3 round tables  
24 capacity at 8 guests per table

For more room layouts tailored to your event,  
please email [events@thelondoner.com](mailto:events@thelondoner.com)



# THE GREEN ROOM

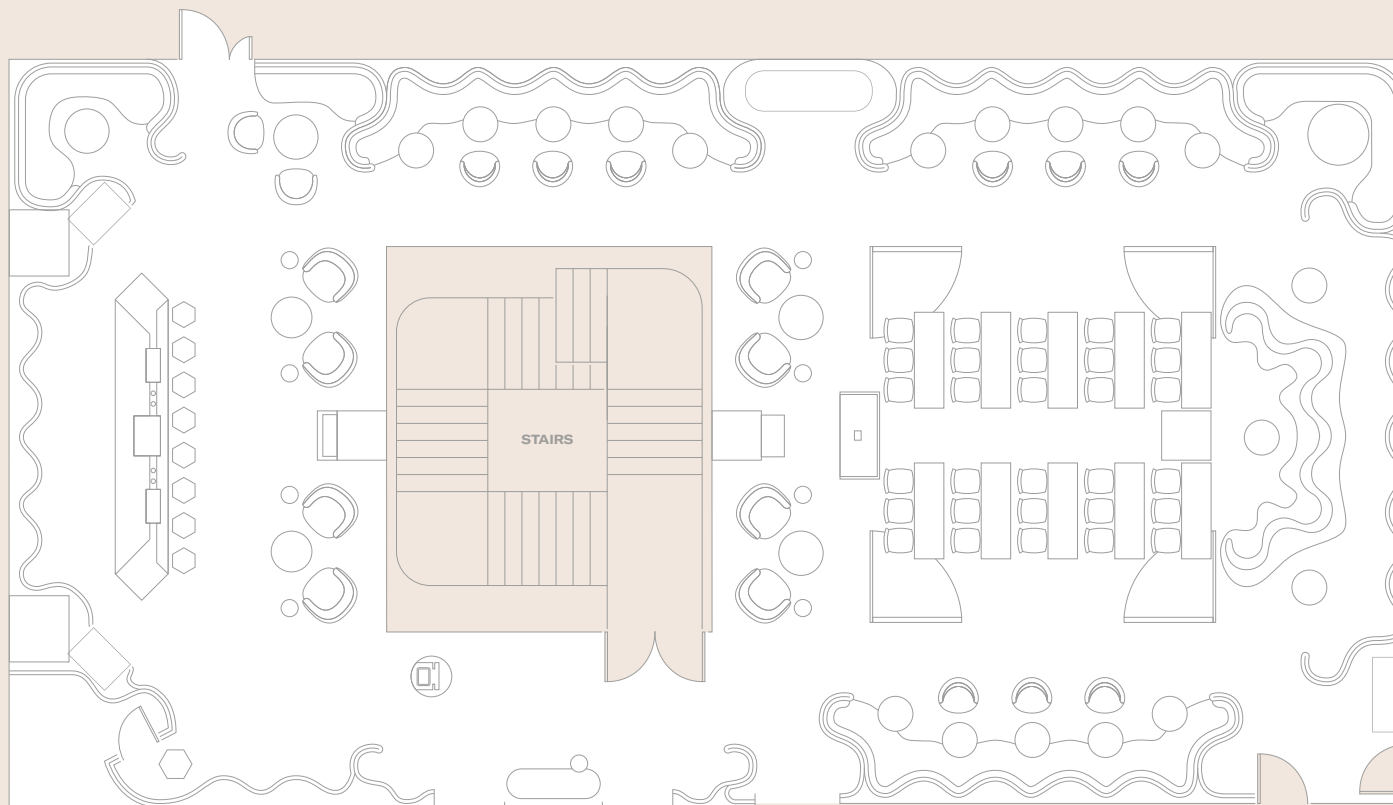


**CLASSROOM**  
with bars

8 tables  
24 capacity at 3 guests per table

For more room layouts tailored to your event,  
please email [events@thelondoner.com](mailto:events@thelondoner.com)

# THE GREEN ROOM

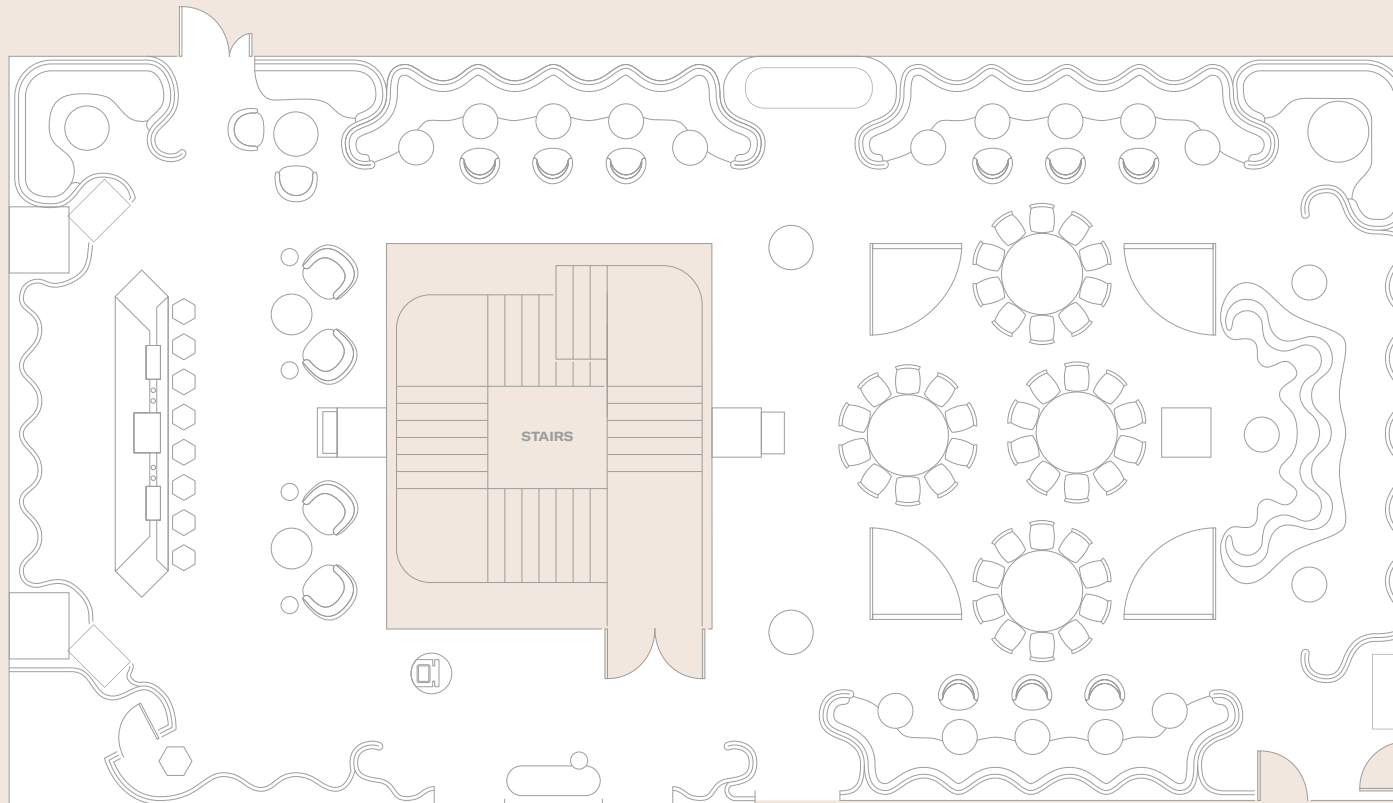


**CLASSROOM**  
with bars

10 tables  
30 capacity at 3 guests per table

For more room layouts tailored to your event,  
please email [events@thelondoner.com](mailto:events@thelondoner.com)

# THE GREEN ROOM

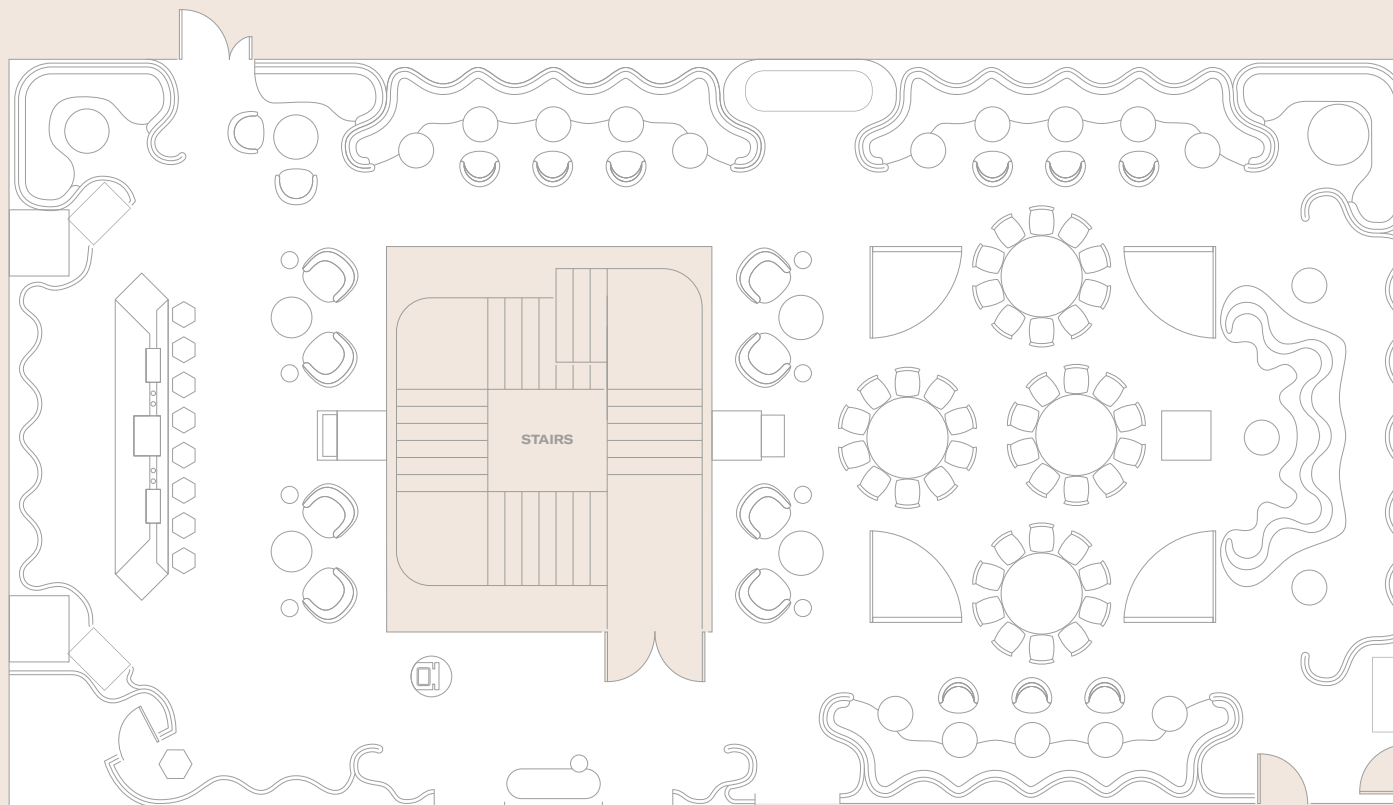


**DINNER**  
with bars

4 round tables with 2 podium tables  
40 capacity at 10 guests per table

For more room layouts tailored to your event,  
please email [events@thelondoner.com](mailto:events@thelondoner.com)

# THE GREEN ROOM

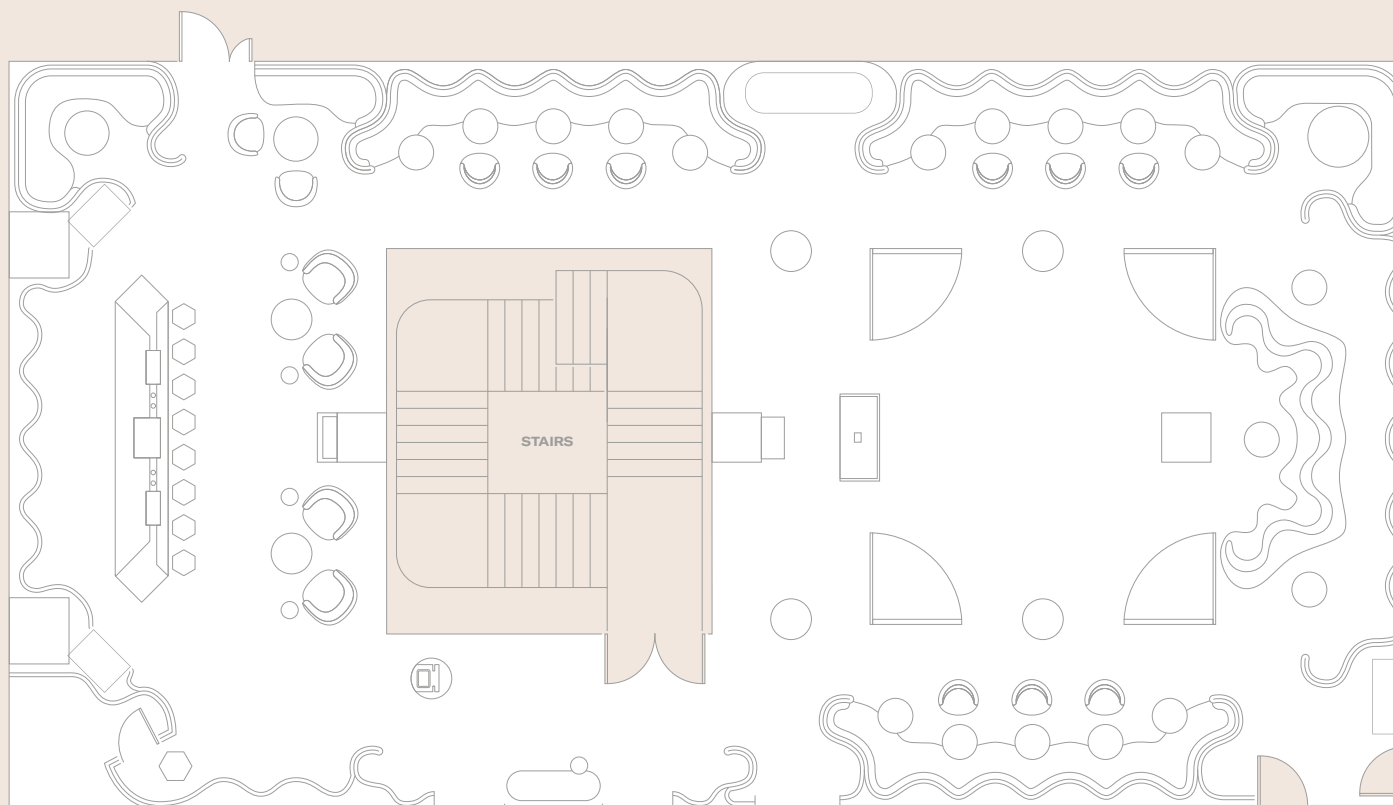


**DINNER**  
with bars

4 round tables  
40 capacity at 10 guests per table

For more room layouts tailored to your event,  
please email [events@thelondoner.com](mailto:events@thelondoner.com)

# THE GREEN ROOM

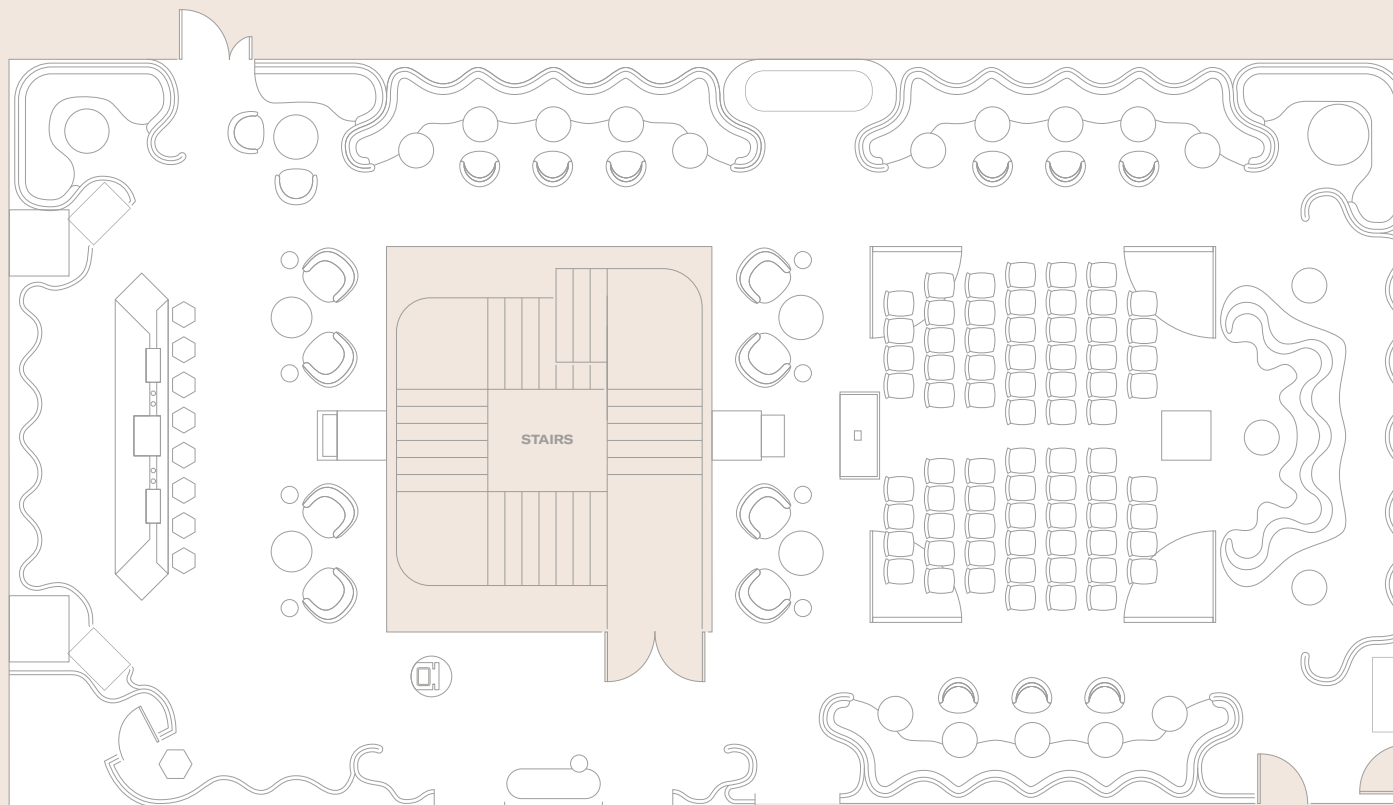


**STANDING**  
with bars

4 podium tables

For more room layouts tailored to your event,  
please email [events@thelondoner.com](mailto:events@thelondoner.com)

# THE GREEN ROOM

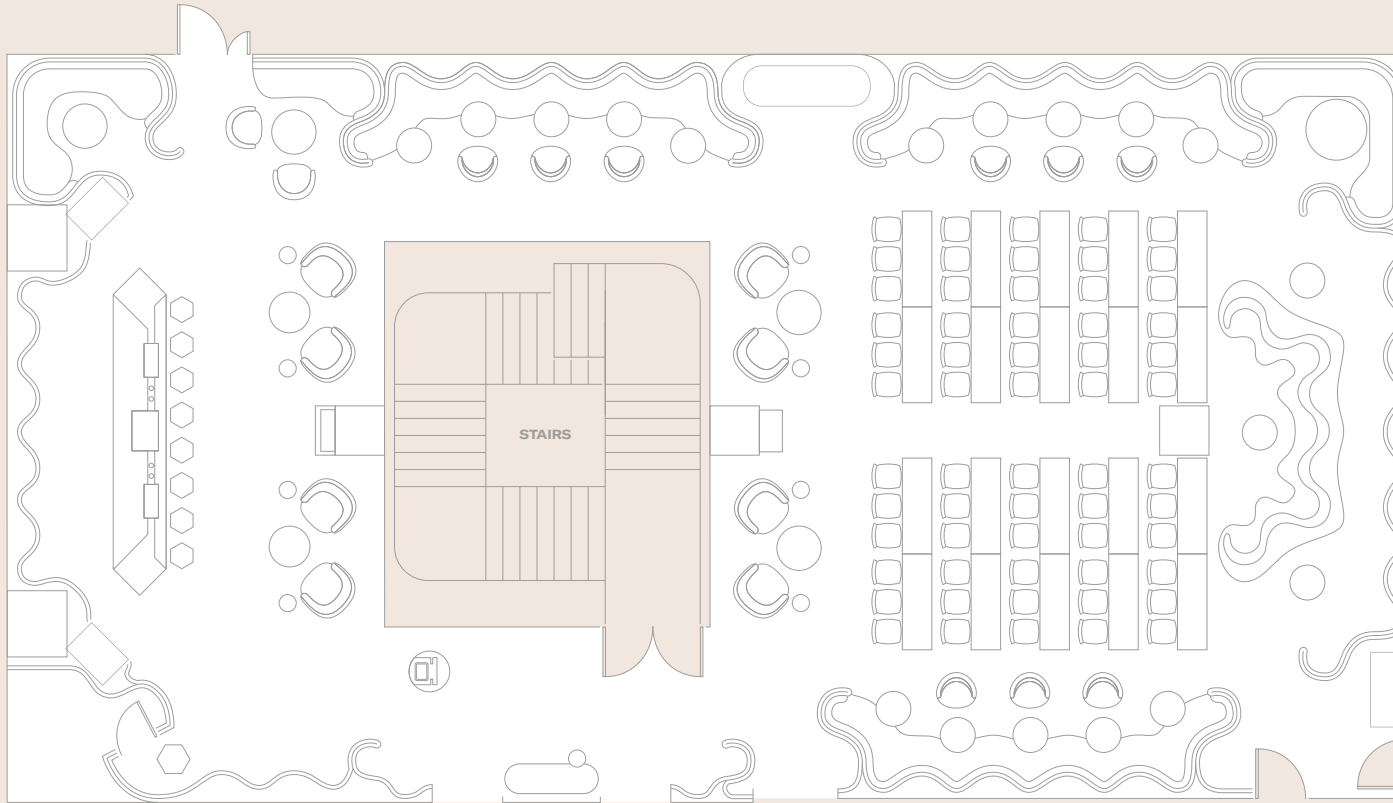


**THEATER**  
with bars

72 capacity

For more room layouts tailored to your event,  
please email [events@thelondoner.com](mailto:events@thelondoner.com)

# THE GREEN ROOM



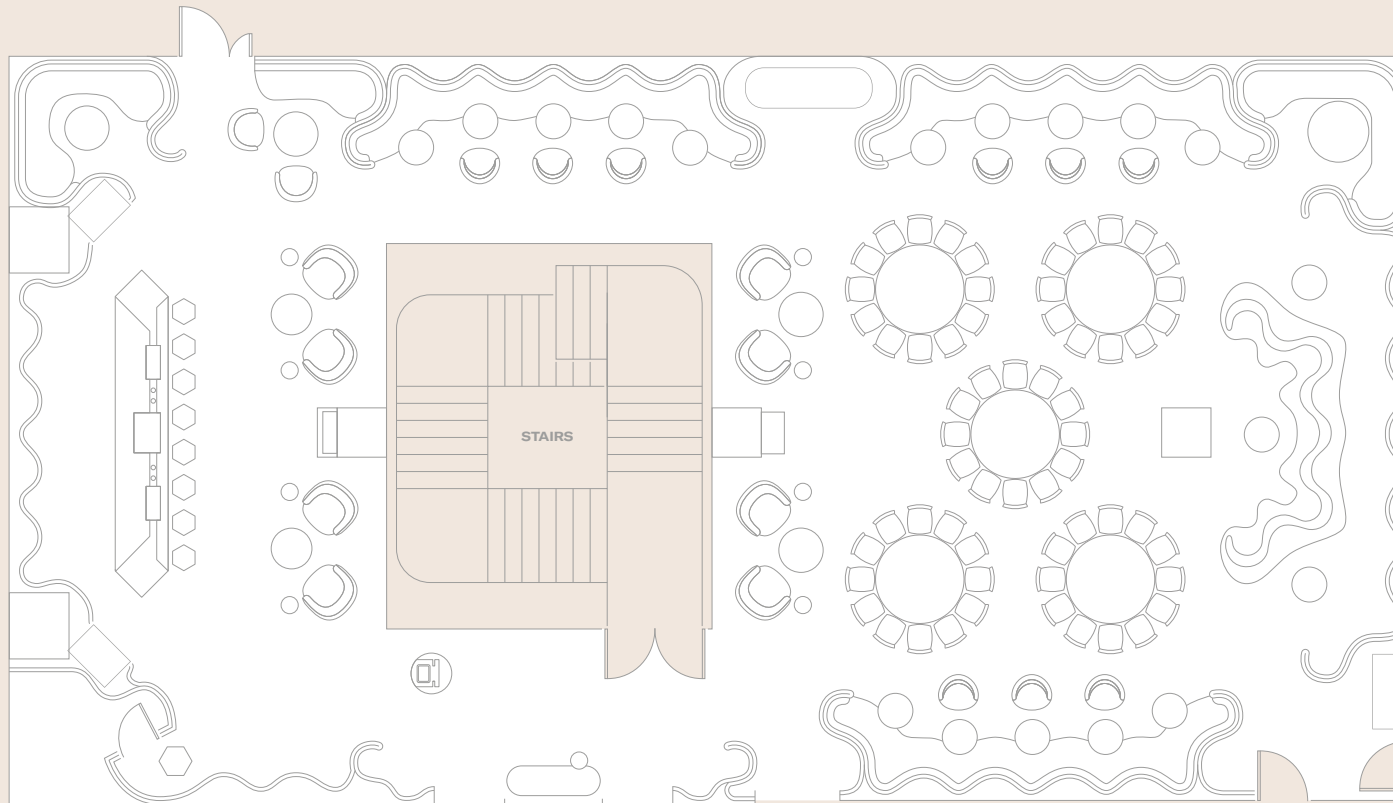
## CLASSROOM

bars removed

20 tables  
60 capacity at 3 guests per table

For more room layouts tailored to your event,  
please email [events@thelondoner.com](mailto:events@thelondoner.com)

# THE GREEN ROOM



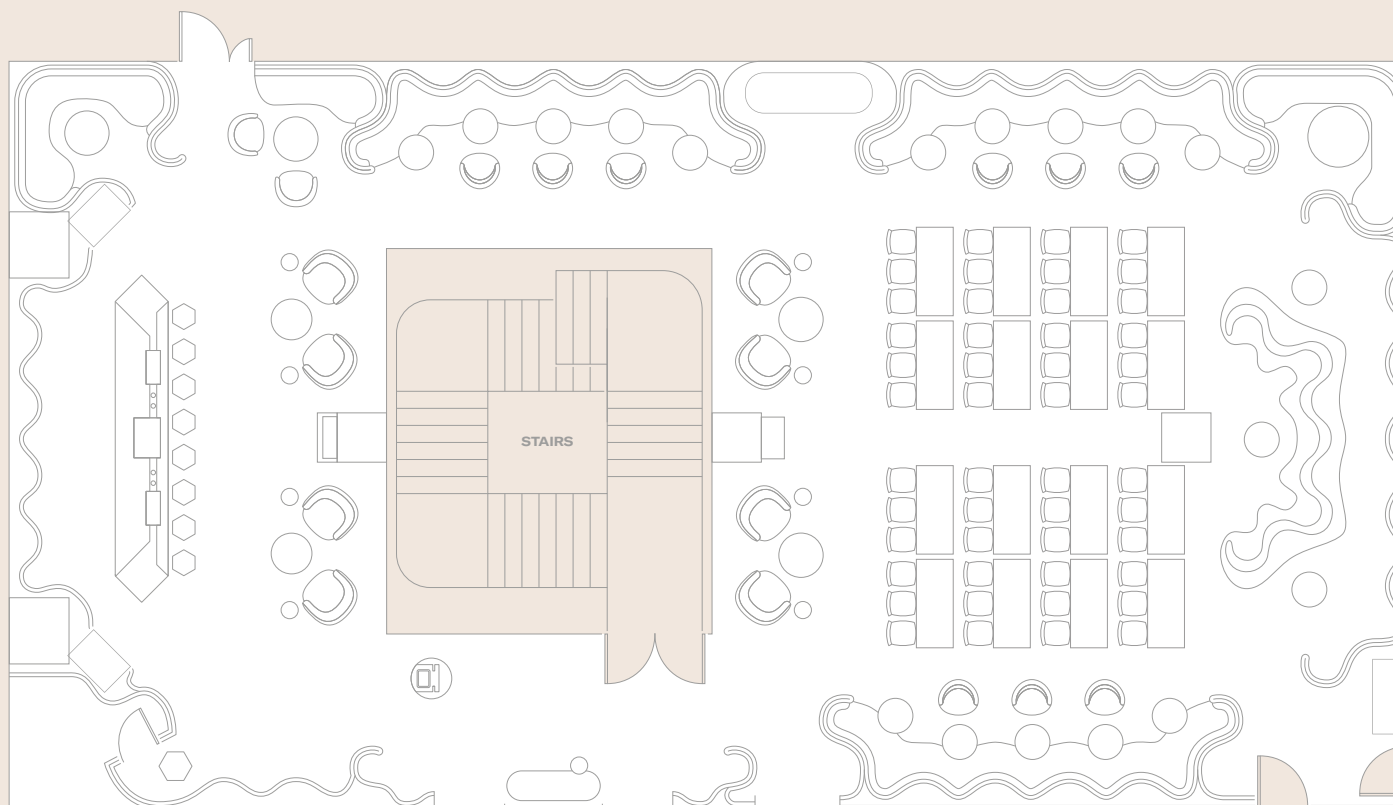
**DINNER**  
bars removed

5 round tables  
60 capacity at 12 guests per table

For more room layouts tailored to your event,  
please email [events@thelondoner.com](mailto:events@thelondoner.com)



# THE GREEN ROOM

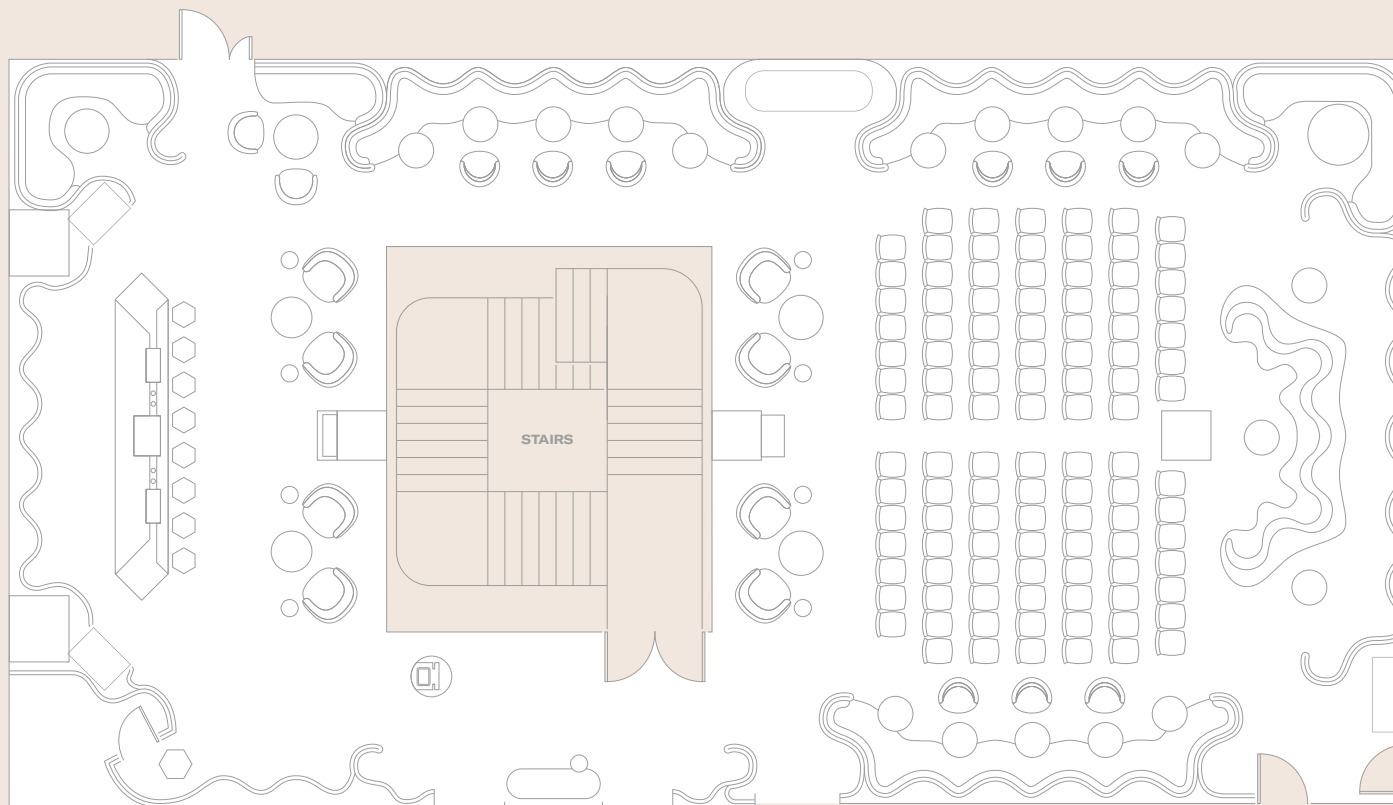


**CLASSROOM**  
bars removed

16 tables  
48 capacity at 3 guests per table

For more room layouts tailored to your event,  
please email [events@thelondoner.com](mailto:events@thelondoner.com)

# THE GREEN ROOM



**THEATER**  
bars removed

108 capacity

For more room layouts tailored to your event,  
please email [events@thelondoner.com](mailto:events@thelondoner.com)



THE LONDONER

LEICESTER SQ.

38 Leicester Square  
London WC2H 7DX  
+44 (0)20 7451 0101  
[thelondoner.com](http://thelondoner.com)